

IoT Logistics, LLC



Asset Tracking & Traceability

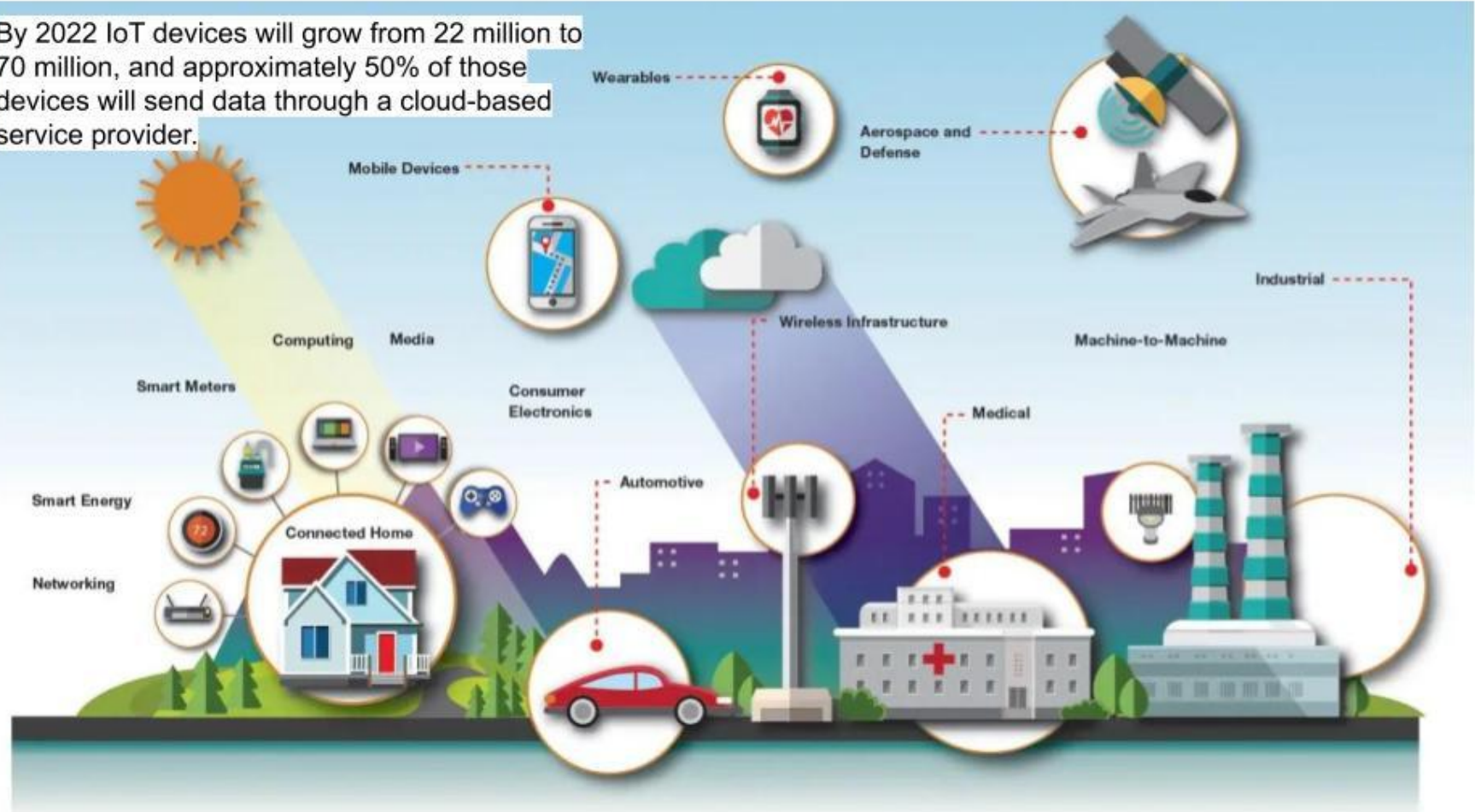
using IoT technology enabled w/ Blockchain & AI



IoT Logistics, LLC

1. **Executive summary**
2. IoT Logistics, LLC Presentation
3. Market Study
4. Visual Elements

By 2022 IoT devices will grow from 22 million to 70 million, and approximately 50% of those devices will send data through a cloud-based service provider.



Executive Summary

- **IoT Logistics** uses state-of-the-art IoT (Internet of Things), AI & Blockchain Technology to track any size shipment for a competitive rate 3-5 times lower per item than current tracking methods.
- Tracking devices can be small enough to be integrated into the individual packaging such as a medicine bottle. Larger devices track assets regardless of shape/size.
- Tracking devices monitor temperature, humidity movement and geo-location of assets.
- Tracking device-enabled shipments can be monitored in real time via a dedicated software platform integrated with the shipper's and/or receiver's mobile or desktop smart devices..

 IoT Logistics, LLC Asset Tracking using Supply Chain Tech

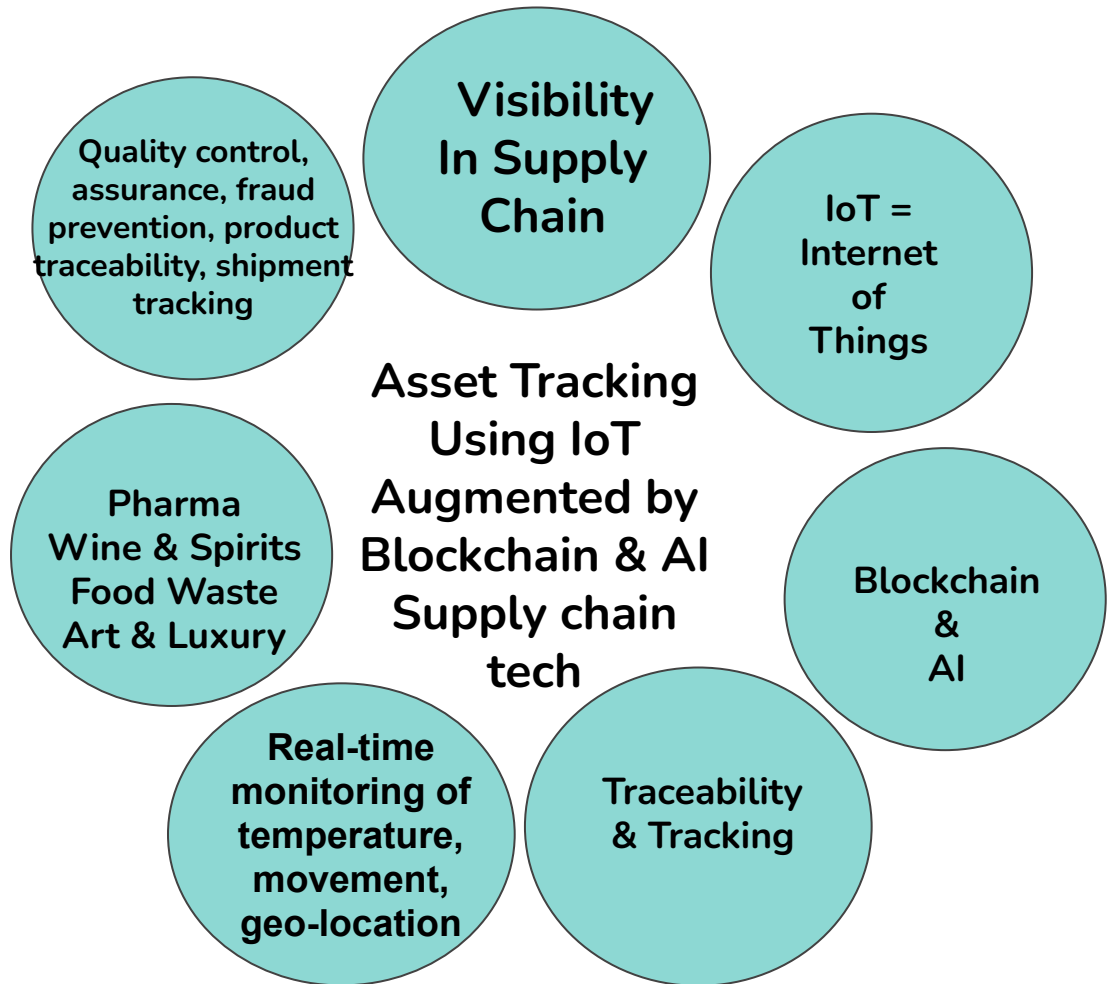
Executive Summary (cont'd.)

- IoT Logistics, LLC is responding to a real need: Visibility and transparency in supply chain management and logistics. With simultaneous AI optimization for supply routes and product demand. Blockchain is used for smart contract deployment which allows for 'trustless' payment (no human intervention needed) upon delivery. This equates to 'Deliver the goods, Get Paid.'
- We offer Cost Optimization of supply chain
- Our Service Suite provides affordable, cost-competitive smart sensors for real time monitoring. Smart contracts deployed on the blockchain allow for 'trustless' delivery-payment mechanisms. AI optimizes supply chain routes and product fulfillment.
- We belong to 3 bearer markets: B2B Supply Chain, B2C Supply Chain and Last Mile Delivery supply chain
- There are no similar offers currently in the EU or the U.S. that uses this particular patented technology which is tailored for seamless integration into individual products and packaging that require cold chain, real-time monitoring.

 IoT Logistics, LLC Asset Tracking using Supply Chain Tech



IoT Logistics, LLC is the affordable asset tracking service that uses state-of-the-art IoT technology on a wide scale for a broad range of products. Our Smart Sensors = Cost Optimization of Supply Chain





IoT Logistics, LLC

Affordable asset tracking supply chain service that uses state-of-the-art, affordable IoT & Blockchain technology

At present there is no affordable, widely implemented way for companies to track their assets during transport.

This is true for the shipper and the receiver.

This applies to B2B as well as B2C.

The IoT technology devices we use are connected to global IoT Connectivity networks. .

It is affordable, no matter how small or large your shipment. At per item rates of 3 to 5X lower than existing methods, you can track the movement, the temperature, the humidity and geo-location of your asset.

Our service offers quality assurance, product traceability, logistics efficiency and fraud prevention. COST OPTIMIZATION



Large market application, flexibility

- ★ For any type of shipment
- ★ Bulk or individual item
- ★ Container
- ★ Flight
- ★ Ship
- ★ Truck
- ★ Car
- ★ Bicycle
- ★ Optimized routes
- ★ Optimized product supply

More + Pluses

- ❖ Affordability
- ❖ Efficiency
- ❖ Fraud Prevention
- ❖ Traceability
- ❖ Logistics Transparency
- ❖ Temperature monitoring
- ❖ Movement monitoring
- ❖ Geo-location
- ❖ Cost Optimization
- ❖ Blockchain enables trustless delivery verification
- ❖ Blockchain + smart contract enabled payment automation

6%

*As of 2017 only 6% of companies reported said they have full visibility into their supply chain...
Despite naming it a TOP PRIORITY year after year*



Shipping Value Assets Necessitates Foolproof Traceability

IoT Logistics, LLC IoT technology provides real-time geo-location of all shipments at an affordable price point

For cents on the dollar per shipped item, IoT Logistics, LLC provides the technology for traceability on every item shipped.

Our Internet of Things technology provides you with real-time tracking ability that allows you to monitor the **temperature**, **humidity**, the **movement** and the **geo-location** of your shipments.

Sync your shipments with your mobile or desktop portal to our tracking software

Verify your shipment arrival

Using smart contracts deployed on the **blockchain**, automatic payment is released as soon as delivery is verified using 'trustless' technology (no human intervention needed)



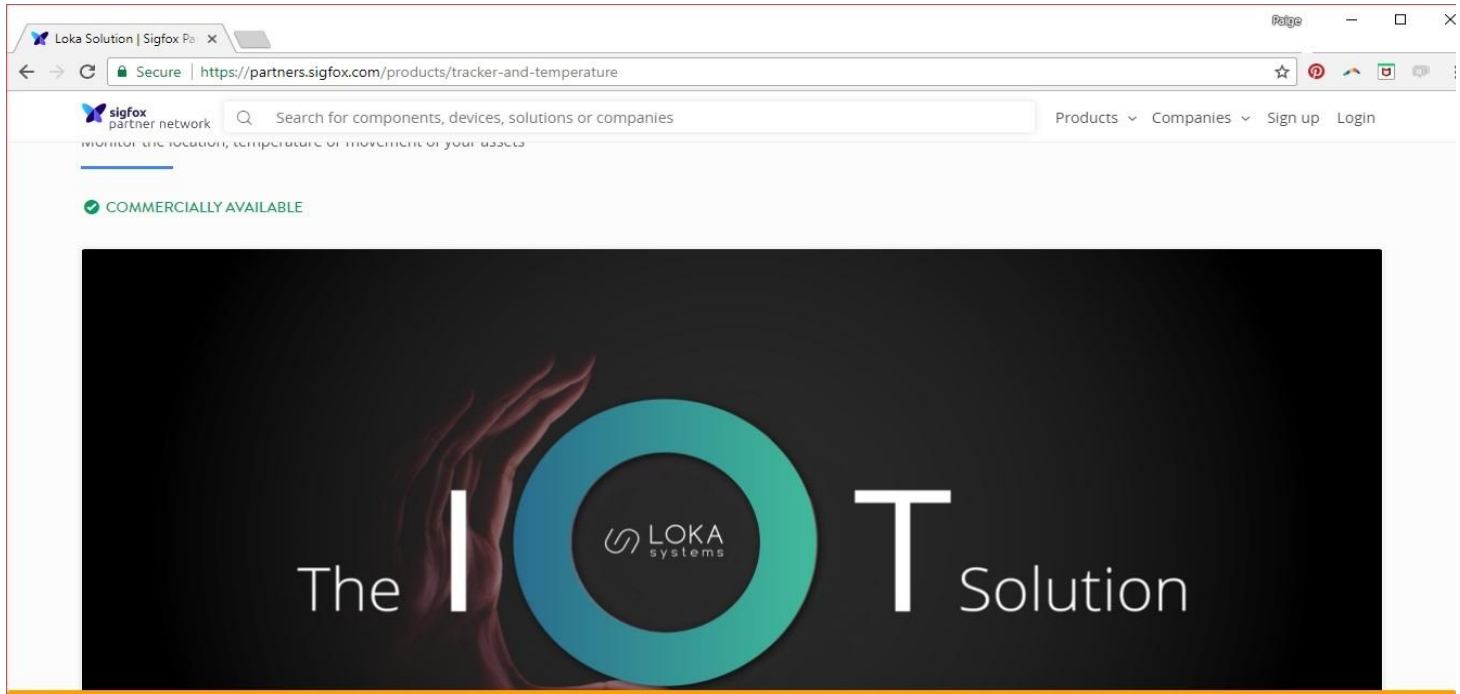
Use Case: The U.S.'s vast, fractured market for wine shipping

Each U.S. state has separate laws regulating shipping winery direct to consumers, winery or bottling-direct to distributors and also use of commercial shippers such as FedEx and UPS which have their own quasi tracking systems. Since small wineries can't use them, there is an urgent need for our affordable traceability shipping IoT technology.

Partial List of U.S. State Regulations

California Winery direct shipping permitted; reciprocal retailer shipping permitted. **Colorado** Winery direct shipping permitted; retailer shipping prohibited. **Connecticut** Winery direct shipping permitted, up to 5 gallons every two months; retailer shipping prohibited. **Delaware** Direct shipping prohibited, with on-site exception: Delaware residents may visit an out-of-state winery and bring or ship wine back to their homes, **but shipping by common carriers (FedEx, UPS) is prohibited.** Retailer shipping prohibited. **District of Columbia** Winery direct shipping permitted, up to 1 case per month; retailer shipping permitted. **Florida** Winery direct shipping permitted; retailer shipping prohibited. **New Mexico** Winery direct shipping permitted, up to 2 cases per month; reciprocal retailer shipping permitted. **New York** Winery direct shipping permitted, up to 36 cases per year; retailer shipping prohibited. **Oregon** Winery direct shipping permitted, up to 2 cases per month; retailer shipping permitted. **Texas** Winery direct shipping permitted, up to 4 cases per year; retailer shipping prohibited. **Utah** Direct shipping prohibited. **Vermont** Winery direct shipping permitted, up to 12 cases per year; retailer shipping prohibited. **Virginia** Winery direct shipping permitted, up to 2 cases per month; retailer shipping permitted. **Washington** Winery direct shipping permitted; retailer shipping prohibited.

Our technology runs on 4G, 5G, LiFi, LoRAwan, MutliRAN, BLE and RF Frequencies. We also use Blockchain technology for smart contract deployment. We offer a range of smart sensors in varying sizes including printable electronics.



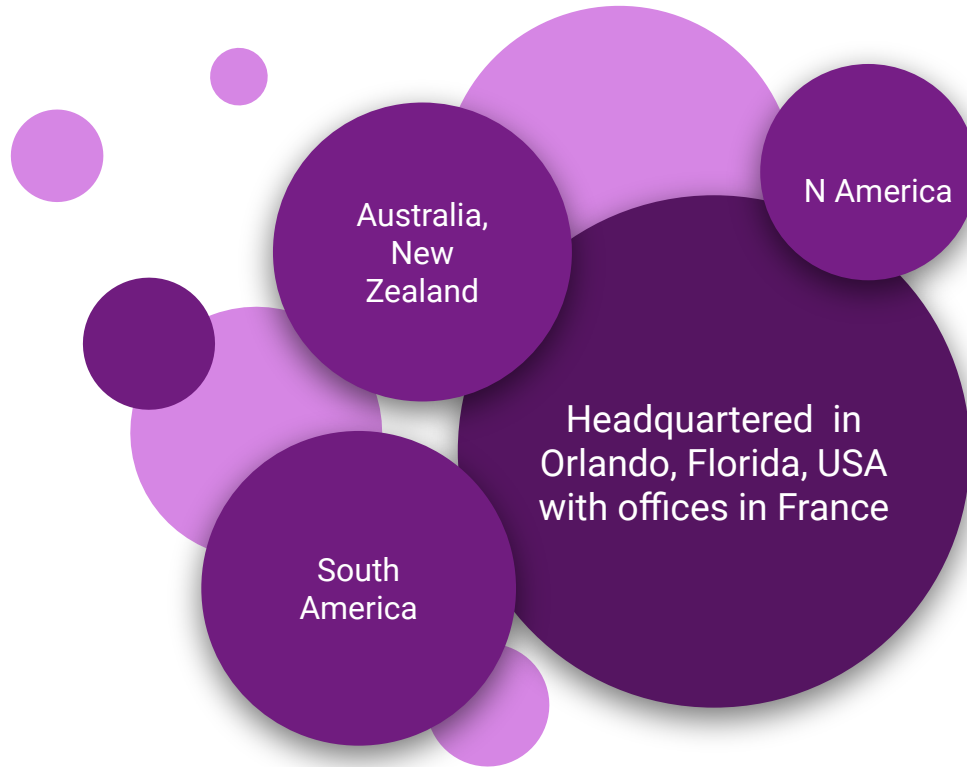
The screenshot shows a web browser window with the URL <https://partners.sigfox.com/products/tracker-and-temperature>. The page features a search bar with the text "Search for components, devices, solutions or companies" and navigation links for "Products", "Companies", "Sign up", and "Login". A green checkmark icon is followed by the text "COMMERCIALLY AVAILABLE". Below this is a large black banner with the text "The IOT Solution" and the LOKA systems logo in the center of the 'O'.

*LPWAN
Low
Power
Wide
Area
Network



IoT Logistics, LLC

1. Executive summary
2. IoT Logistics, LLC Presentation
3. Market Study
4. **Visual Elements**



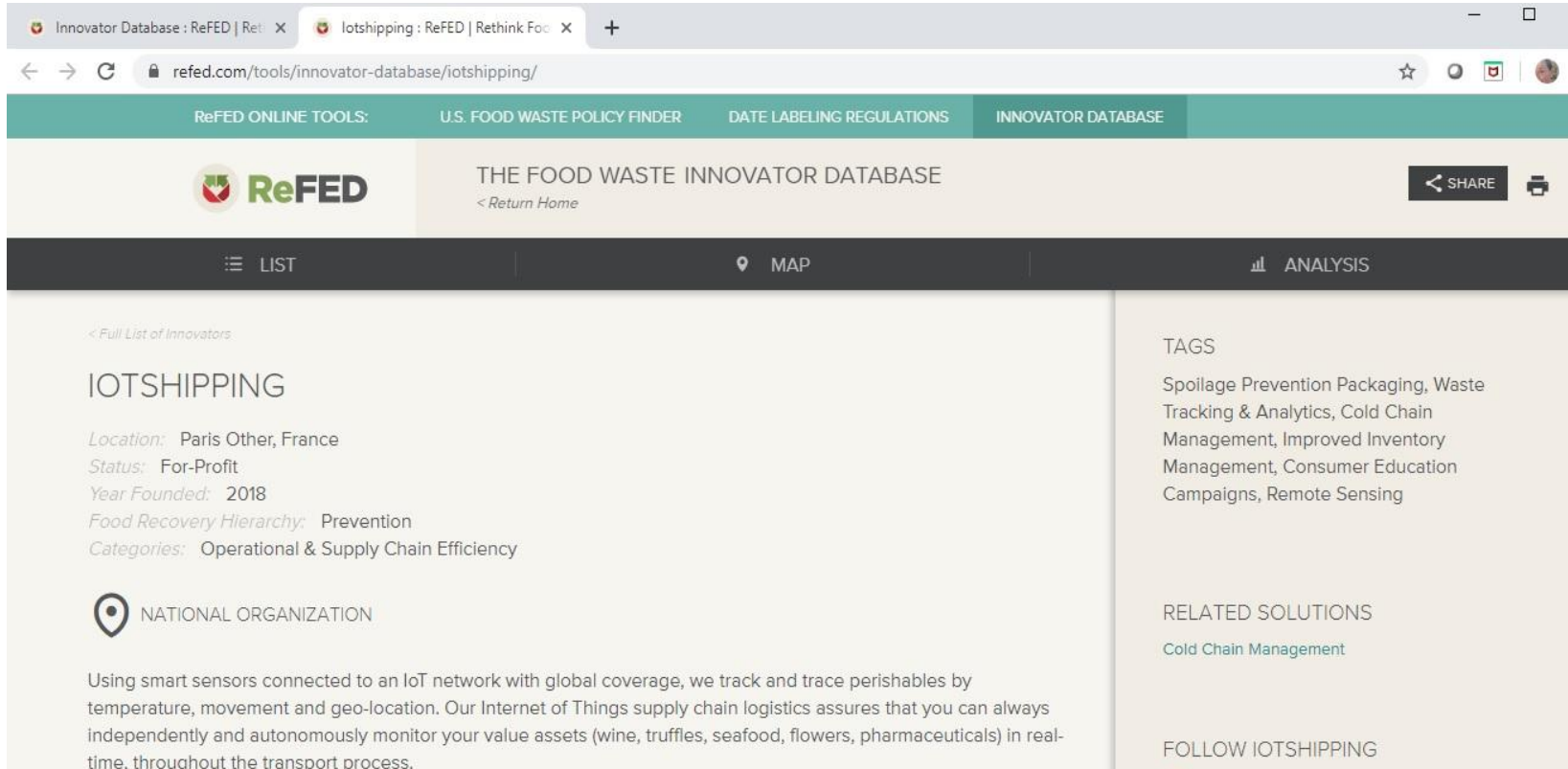
Australia,
New
Zealand

N America

Headquartered in
Orlando, Florida, USA
with offices in France

South
America

Food Waste Reduction Innovator US EPA & FDA Recognized



The screenshot shows a web browser window with two tabs. The active tab is titled "Iotshipping : ReFED | Rethink Food". The address bar shows the URL "refed.com/tools/innovator-database/iotshipping/". The website has a teal header with navigation links: "ReFED ONLINE TOOLS:", "U.S. FOOD WASTE POLICY FINDER", "DATE LABELING REGULATIONS", and "INNOVATOR DATABASE". Below the header is the ReFED logo and the title "THE FOOD WASTE INNOVATOR DATABASE" with a "< Return Home" link. A "SHARE" button is also visible. The main content area has a dark navigation bar with "LIST", "MAP", and "ANALYSIS" options. The "LIST" option is selected. The main content displays the profile for "IOTSHIPPING". It includes a link "< Full List of Innovators", the name "IOTSHIPPING", and details: "Location: Paris Other, France", "Status: For-Profit", "Year Founded: 2018", "Food Recovery Hierarchy: Prevention", and "Categories: Operational & Supply Chain Efficiency". A "NATIONAL ORGANIZATION" badge is shown. A paragraph describes the organization's use of IoT technology for tracking and tracing perishables. On the right, there are sections for "TAGS" (Spoilage Prevention Packaging, Waste Tracking & Analytics, Cold Chain Management, Improved Inventory Management, Consumer Education Campaigns, Remote Sensing), "RELATED SOLUTIONS" (Cold Chain Management), and "FOLLOW IOTSHIPPING".

Innovator Database : ReFED | ReFED | Rethink Food

refed.com/tools/innovator-database/iotshipping/

ReFED ONLINE TOOLS: U.S. FOOD WASTE POLICY FINDER DATE LABELING REGULATIONS INNOVATOR DATABASE

ReFED

THE FOOD WASTE INNOVATOR DATABASE
< Return Home


SHARE

LIST MAP ANALYSIS

< Full List of Innovators

IOTSHIPPING

Location: Paris Other, France
Status: For-Profit
Year Founded: 2018
Food Recovery Hierarchy: Prevention
Categories: Operational & Supply Chain Efficiency

 NATIONAL ORGANIZATION

Using smart sensors connected to an IoT network with global coverage, we track and trace perishables by temperature, movement and geo-location. Our Internet of Things supply chain logistics assures that you can always independently and autonomously monitor your value assets (wine, truffles, seafood, flowers, pharmaceuticals) in real-time, throughout the transport process.

TAGS
Spoilage Prevention Packaging, Waste Tracking & Analytics, Cold Chain Management, Improved Inventory Management, Consumer Education Campaigns, Remote Sensing

RELATED SOLUTIONS
Cold Chain Management

FOLLOW IOTSHIPPING

IoT Logistics, LLC

**Asset tracking and traceability using
IoT supply chain tech optimized with
Blockchain and AI**

Contact: Paige Donner

paige@iotshipping.xyz

+1 786 - 633-2578

<https://iotlogistics.international>

IoT Logistics, LLC

CAGE Code 8MQ90 - Federal Govt Contractor